



Innovation at Work

TRACKED STOCKPILERS

TS50 • TS65 • TS80 • TS100

- Huge stockpiling capacities
- Impressive ease of manoeuvrability around site
- Rapid set up time
- Can reduce fuel, maintenance & labour costs by up to 80%
- Eliminate/ reduce need for wheel loader on-site
- Can be fed by any primary / secondary Crusher or Screener
- Dramatically increase Crusher / Screener plant productivity and efficiency





Innovation at Work

OPTIONS

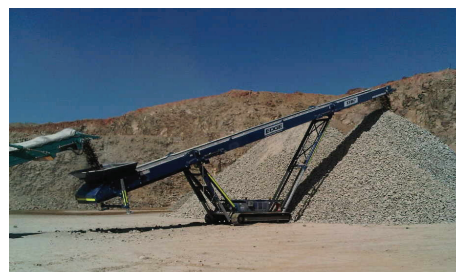
- Dual power
- Radio remote control for all functions
- Automatic stockpiling program
- Higher HP Engines
- Fully enclosed skirting
- Diesel Genset / electric hydraulic power pack / twin direct electric drive

FEATURES

- Stockpile rates 100tph - 1000tph
- Eliminate double handling of material with wheel loader
- Stockpiling 0-350mm (14 inch down) material
- Lengths from 50ft (15m) to 80ft (24m)
- Fuel consumption from 5 litres per hour
- Deutz or Caterpillar engine available
- Belt widths from 36" (900mm) - 48" (1200mm) available
- Containerised for global transportation
- Environmental benefits - reduced dust, emissions + noise
- Automatic stockpiling program (option) reduces contamination, compaction and degradation

MATERIALS

- Construction + demolition waste (C+D)
- Sand + gravel
- Compost
- Topsoil
- Wood waste
- Mulch
- Scrap metal
- Aggregates
- Coal



**Contact your local dealer
for full product specification**